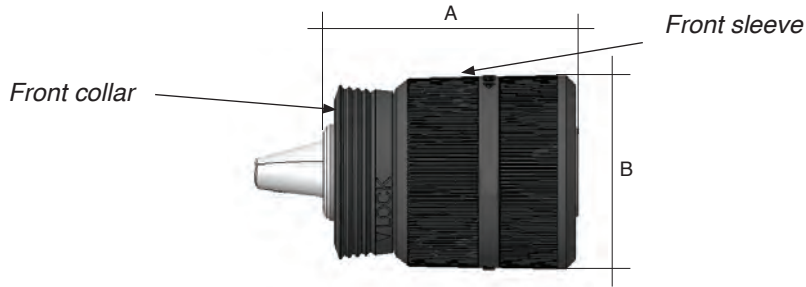




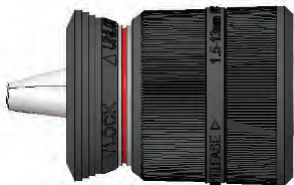
Impact Chucks



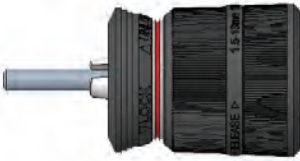
Feature

Capacity mm	Material of sleeve	Jaws	A mm	B mm	Weight gr	Pull force of front collar
1,6-13	Plastic	Carbide	56	42,7	260	20N+/-10N

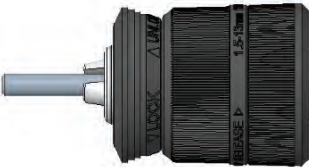
How to use the chuck



STEP 1:
Pull out the front collar by hand.



STEP 2:
Like a traditional chuck, rotate front sleeve to open and close the chuck.



STEP 3:
After chuck is tightened on the bit, press the front collar by hand to lock the sleeve.

Available models



Model	Mount	Max torque	Application
TUPID13F12R	1/2 thread	113 N.m	Drill



Model	Mount	Max torque	Application
TUPID13X1	1/4 hex	67 N.m	Impact driver



Model	Mount	Max torque	Application
TUPID13SQ12	1/2 square	113N.m	Impact wrench